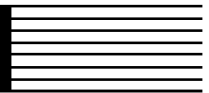
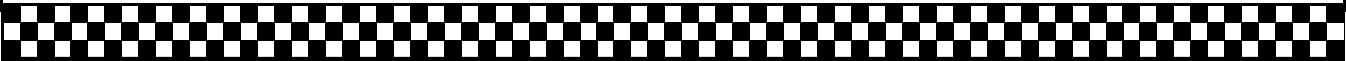


# RACE GRID



## PRE-ELECTRONIC 600 CHAMPIONSHIP

### RACE 9 & RACE 20

ROW 2	<div>11 J. LORD</div> <div>6</div>	<div>44 G. ATKINSON</div> <div>5</div>	<div>191 W. KEMP</div> <div>4</div>
ROW 1	<div>164 J. CRAWFORD</div> <div>3</div>	<div>26 L. ASHTON</div> <div>2</div>	<div>69 B. RUSSELL</div> <div>1</div>
POLE			
			
ANY NON QUALIFIED RIDERS WILL START FROM THE BACK OF THE GRID			