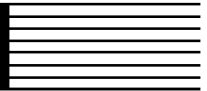


# RACE GRID



## GOLDEN SUPERSPORT 600 CHAMPIONSHIP

### RACE 3 & RACE 14

|       |                           |                             |                             |
|-------|---------------------------|-----------------------------|-----------------------------|
| ROW 4 | <b>31</b> D. BROOKS<br>12 | <b>55</b> G. LEIGHTON<br>11 | <b>44</b> G. ATKINSON<br>10 |
| ROW 3 | <b>82</b> N. CLARE<br>9   | <b>88</b> T. GARNER<br>8    | <b>142</b> R. NEWBOLD<br>7  |
| ROW 2 | <b>191</b> W. KEMP<br>6   | <b>11</b> J. LORD<br>5      | <b>186</b> D. TUPLIN<br>4   |
| ROW 1 | <b>26</b> L. ASHTON<br>3  | <b>21</b> J. TREZINS<br>2   | <b>66</b> B. DALE<br>1      |
|       |                           |                             | <b>POLE</b>                 |

ANY NON QUALIFIED RIDERS WILL START FROM THE BACK OF THE GRID