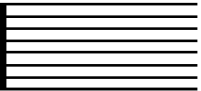


RACE GRID



PRE-ELECTRONIC 600 & 700cc TWINS

RACE 5 & RACE 15

ROW 4	12	11	106 B. WILKINSON 10
ROW 3	46 A. REDMOND 9	64 I. EMSON 8	191 W. KEMP 7
ROW 2	96 T. HODGE 6	82 N. CLARE 5	24 A. MARTIN 4
ROW 1	911 A. SHERIFF 3	6 S. SEDDON 2	88 D. CARSON 1

POLE

ANY NON QUALIFIED RIDERS WILL START FROM THE BACK OF THE GRID